
IMAGE CONTENT TECHNOLOGY LLC

Lucis Pro 6 Quick Start Guide

The Lucis Pro User Interface

Figure 1: Single Channel mode

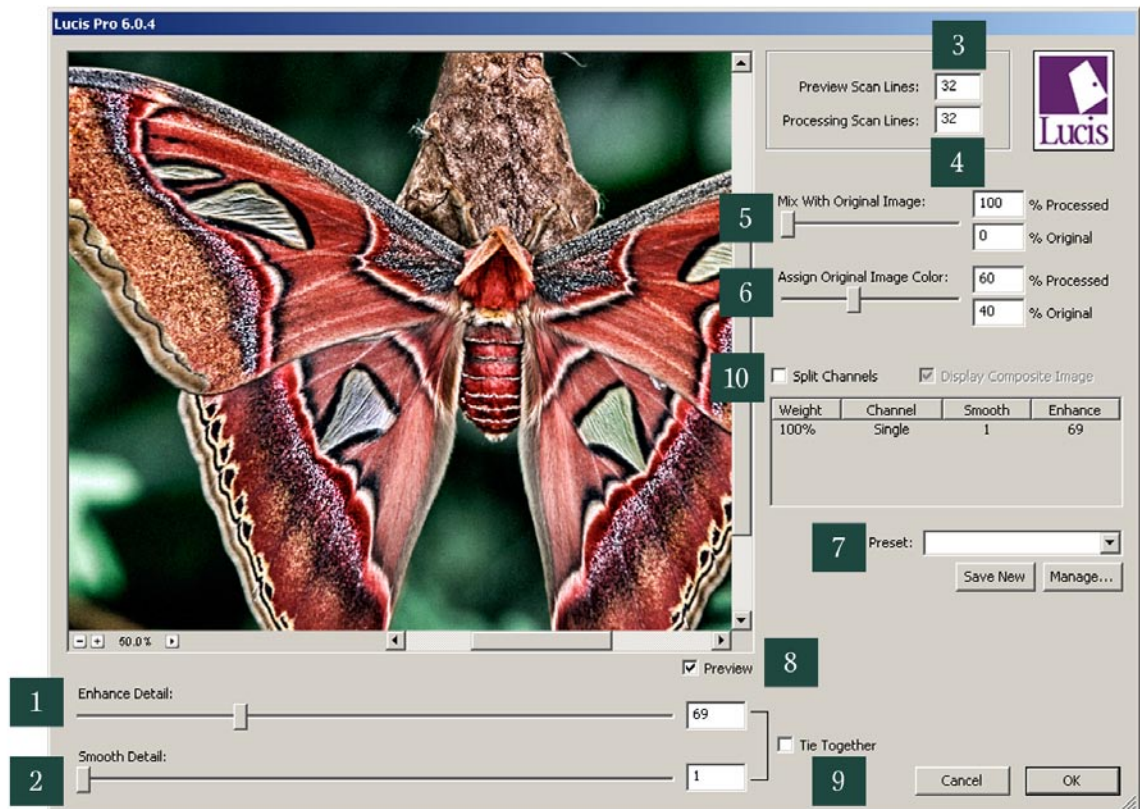


Table 1: Single Channel mode

	Window Feature	Description
1	Enhance Detail	<p>Move the slider to the left to increasingly reveal image detail/features. The slider value is displayed at the right end of the slider. You may also type in slider values. Slider values must be an odd number and the value of the Enhance Detail slider must be higher than the Smooth Detail slider value.</p> <p>When the image is first opened the Enhance Detail slider value equals the range of intensity values in the image (the highest intensity minus the lowest intensity), rounded to make it odd.</p> <ul style="list-style-type: none"> • For 8-bit images the maximum value is 257 • For 16-bit images the maximum value is 65,537
2	Smooth Detail	<p>Move the Smooth Detail slider to the right to increasingly smooth image detail/features. The slider value is displayed at the right end of the slider. You may also type in slider values. Slider values must be an odd number and the value of the Smooth Detail slider must be less than the Enhance Detail slider value.</p> <p>When the image is first opened, the Smooth Detail slider value is always 1.</p>
3	Preview Scan Lines	<p>Enter the number of Scan Lines used by the Lucis processing displayed in the Preview Window here. Increase the number of Scan Lines to remove any radial image artifacts; decrease it to create radial artifacts in the image. This value affects only the Preview window, not the final image processing.</p>
4	Processing Scan Lines	<p>Enter the number of Scan Lines for the final Lucis processing here. Increase to remove any radial image artifacts; decrease it to create radial artifacts in the image. This value has no effect on the image displayed in the Preview window.</p>
5	Mix with Original Image	<p>Use this slider to mix the processed image with a percentage of the original image..</p>
6	Assign Original Image Color	<p>Lucis processing may brighten or shift colors in patches of the image. Use this slider to assign all or a percentage of the colors of the original image to the Lucis image.</p>
7	Preset	<p>This menu contains all user-defined presets that have been saved. The Save New button saves the current settings as a new preset, and the Manage... button displays a dialog that allows you to delete or rename existing presets.</p>
8	Preview	<p>When checked, the Preview window displays the image as it will appear after Lucis processing. Uncheck this box to view the original image.</p>
9	Tie Together	<p>Check this box to keep the difference between the Smooth Detail slider value and the Enhance Detail slider value constant. When you move one slider, the other slider moves by the same amount.</p>

10	Window Feature	Description								
	Channel List	<div data-bbox="678 296 1258 541" style="border: 1px solid gray; padding: 5px;"> <input type="checkbox"/> Split Channels <input checked="" type="checkbox"/> Display Composite Image <table border="1" style="width: 100%; border-collapse: collapse;"> <thead> <tr> <th>Weight</th> <th>Channel</th> <th>Smooth</th> <th>Enhance</th> </tr> </thead> <tbody> <tr> <td>100%</td> <td>Single</td> <td>1</td> <td>255</td> </tr> </tbody> </table> </div> <p>When the Split Channels check box is unchecked, the Lucis Pro UI is in Single Channel mode. Only one color channel is displayed, labeled “Single”.</p>	Weight	Channel	Smooth	Enhance	100%	Single	1	255
Weight	Channel	Smooth	Enhance							
100%	Single	1	255							

Figure 2: Split Channel mode

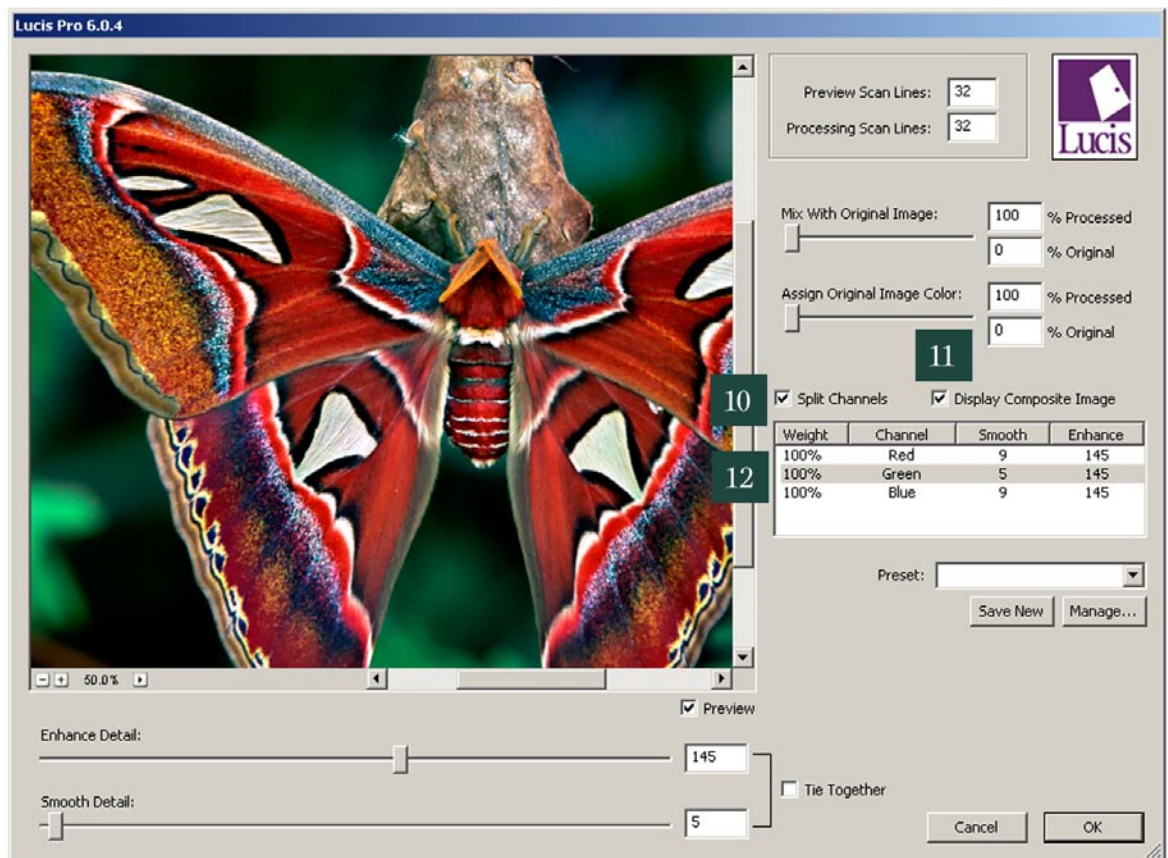
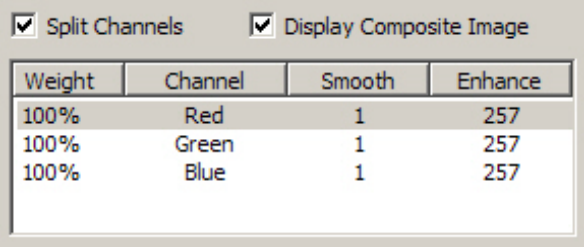


Table 2: Split Channel mode

	Window Feature	Description
10	Channel List	 <p>By checking the Split Channels box you change from Single Channel mode to Split Channel mode. In Split Channel mode, each color channel can be selected and enhanced separately. Split Channel mode is only enabled for color images.</p>
11	Display Composite Image	This control is enabled in Split Channel mode only. When checked, the Preview window displays the full image with all color channels. Otherwise, the Preview window displays only the selected color channel as a grayscale image.
12	Weight	This column controls the amount of the channel's data that is included in the processed image, from 0% (channel is disabled) to 100% (channel is fully visible).

System Requirements

WINDOWS SYSTEM REQUIREMENTS: Windows version of Lucis Pro 6 with the Windows Lucis Pro 6 dongle. A 32-bit or 64-bit Windows XP or Vista computer with at least 2 GB RAM and Adobe® Photoshop® CS3 or CS4 and/or Adobe® Photoshop® Elements 6 or 7.

MACINTOSH SYSTEM REQUIREMENTS: Macintosh version of Lucis Pro 6 with the Macintosh Lucis Pro 6 dongle. An Intel Macintosh computer with OS 10.5 and at least 2 GB RAM and Adobe® Photoshop® CS3 or CS4 and/or Adobe® Photoshop® Elements 6 or 7.

Installation

Windows

1. Insert the Windows Lucis Pro 6 dongle into a USB port and insert the Lucis Pro 6 DVD into your drive.
2. If the installer does not start automatically, open Windows Explorer, navigate to the DVD drive, and launch the “setup32.exe” application if you have a Windows 32-bit computer or if you have a Windows 64-bit computer and Photoshop CS3 or the 32-bit version of Photoshop CS4. If you have a Windows 64-bit computer and the 64-bit version of Photoshop CS4 launch the “setup64.exe” application.
3. If you are installing on Windows Vista, select “Allow” in the user authentication dialog.
4. You will see the Welcome screen. Click the Next button. The End User License Agreement will be displayed.
5. Read the Agreement carefully. Indicate your acceptance of the Agreement by checking the “I accept the terms....” check box and then click the Next button. The User Information screen will be displayed. If you do not accept the terms of the Agreement, do not install Lucis Pro 6.
6. Enter your name, the name of your organization (if applicable), and the serial number in the appropriate fields.
7. Click the Next button. The Choose Host Applications screen will be displayed.
8. Select one of the listed host applications and click the Add button. If you would like to use the plug-in with multiple applications, repeat this process with each such application from the list. If your application is not displayed in the list, select the “Other...” entry and click the Add button. Click the Next button.
9. If you selected the “Other...” entry on the previous screen, the Destination Folder screen will be displayed. Enter the path to your application’s plug-ins folder and click the Next button.
10. The Attach Security Dongle screen will be displayed if you have not already attached the dongle. Insert the dongle into a USB port if you have not already done so.
11. Click the Next button.
12. The Ready to Install page will be displayed. Click the Install button.
13. Once installation is complete, the Installation Finished screen will be displayed. Click the Finish button. Lucis Pro 6 is now ready to use.

NOTE: For a 64-bit Windows computer, you must manually install the 32-bit version of Lucis Pro 6 if you have Photoshop CS3 or if you have installed the 32-bit version of Photoshop CS4. Insert the Lucis Pro 6 DVD. When asked if you wish to install select NO. Navigate to the Lucis Pro 6 DVD and run setup32.exe. If your application is not detected properly, choose the “Other...” entry and manually select the filters folder which is under the plug-ins folder in Photoshop.

Macintosh

1. Insert the Macintosh Lucis Pro 6 dongle into a USB port and insert the Lucis Pro 6 DVD into your drive.
2. Launch the “Lucis Pro” package. You will see the Welcome screen.
3. Click the Continue button. The Software License Agreement screen will be displayed.
4. Read the Agreement carefully and then click the Continue button. Indicate your acceptance of the Agreement by clicking on the Agree button on the panel that appears. The Select a Destination screen will be displayed. If you do not accept the terms of the Agreement, do not install Lucis Pro 6.
5. Select your system volume and click the Continue button. The Enter Serial Number screen will be displayed.
6. Enter the serial number and click the Continue button. The Choose Host Applications screen will be displayed.
7. Select one or more of the listed host applications. If your application is not displayed in the list select the “Other...” entry. Click the Continue button.
8. If you selected the “Other...” entry on the previous screen, a dialog will be displayed. Navigate to your application’s plug-ins folder and click the Open button.
9. The Attach Security Dongle screen will be displayed if you have not already installed the dongle. Insert the dongle into a USB port if you have not already done so. Click the Continue button.
10. The Install screen will be displayed. Click the Install button. You will be prompted for an administrator password and then the installation will proceed.
11. Once installation is complete, the Install Succeeded screen will be displayed. Click the Close button. Lucis Pro 6 is now ready to use.

The information contained in this Quick Start Guide is subject to change without notice. Image Content Technology LLC shall not be liable for errors contained herein, or for consequential damages in connection with the furnishing, performance, or use of this manual or software.

©1997-2009 Image Content Technology LLC. All rights reserved. Protected by U. S. patents 5,563,962; 5,592,571; and 5,715,334. Lucis, the Lucis logo, LucisArt, the LucisArt logo, the Image Content Technology logo are all trademarks or registered trademarks of Image Content Technology LLC. Microsoft and Windows are trademarks of Microsoft Corporation. Macintosh is a trademark of Apple Computer, Inc. Adobe, Photoshop, and Photoshop Elements are trademarks of Adobe Systems Incorporated.

June 2009

Image Content Technology LLC

www.lucispro.com

sales@lucispro.com